

Prosys® 2000ml Urine Drainage Bag

Prosys® Single Use Night Bag

10 x Drainable, Non-Sterile, 2000ml Night Bag. **Order Code:** PHSU2

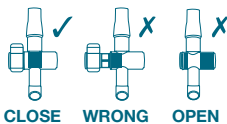
Instructions for use

Fitting a Prosys® single use night bag to a Prosys® leg bag

IMPORTANT: Do not disconnect your leg bag from your catheter

- ① Open pack.
- ② Remove the protective cap from the top of the inlet tube on the Prosys® night bag. Push the connector into the flexible tube at the bottom of the Prosys® leg bag tap.

- ③ Ensure that the tap of the night bag is in CLOSE position as indicated.



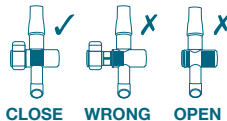
- ④ Once the two bags are securely connected, open the tap of the leg bag, to allow overnight drainage of urine into the night bag.

- ⑤ To ensure free drainage of urine and support of the Prosys® night bag we advise the use of a floor stand or hanger.

Fitting a Prosys® single use night bag to a sheath

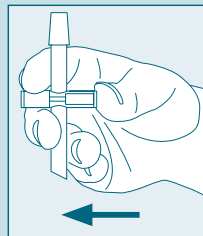
- ① Open pack.
- ② Remove the protective cap from the top of the inlet tube on the Prosys® night bag. Push the connector into the sheath outlet ensuring the connection is secure.

- ③ Ensure that the tap of the night bag is in CLOSE position as indicated.





Emptying and disposal of used Prosys® single use night bag

- ✓ Remove safety clip on the outlet tap at the bottom of the night bag.
- ✓ Empty the Prosys® single use drainage bag by pushing the outlet tap to one side as indicated.
- ✓ The contents should be poured in to the toilet and the toilet flushed.
- ✓ If the bags are to be disposed of through the refuse collection service, ensure the bag is wrapped in several layers of newspaper or in a plastic bag and sealed securely before you place it in a dust bin.
- ✗ Do not incinerate any used bags or any other equipment indoors.
- ✗ Used bags must not be flushed down the toilet.



IMPORTANT INFORMATION

 **Reuse Precaution:** This item is a single use device. Do not sterilise, reuse or repackage as this may create a risk of infection for the patient or the user.

 **Contains or presence of Phthalates:** This product contains the phthalate DEHP. Phthalates are widely used as plasticizers in medical products and have undergone extensive testing. However when using the device, it should be taken into consideration that a lack of evidence regarding DEHP and any disease or adverse effect does not mean that there are no risks.

 **LATEX FREE**



CLINISUPPLIES
Ideas into solutions

REF PHSU2
LOT



Clinisupplies Ltd, Qualitas House, 100 Elmgrove Road, Harrow, Middlesex HA1 2RW, UK
Telephone: 020 8863 4168 Fax: 020 8426 0768 Email: info@clinisupplies.co.uk
www.clinisupplies.co.uk

Prosys is a trademark of Clinisupplies Ltd.

May 2015